

Euro Contour™ Hardware System

AmesburyTruth™ is pleased to present a new line of commercial grade hardware we call Contour™. Our design team has developed a unique hardware system for commercial casement and awning windows. Euro Contour is composed of locks, hinges, and operators designed to compliment one another both aesthetically and functionally. All components utilize the standard T1 style euro groove for maximum flexibility and installation ease.

The Contour™ lock maintains a longer handle and is cleverly designed to meet ADA requirements. Increased travel allows up to 8 lock points on casement sash sizes ranging up to 102" (2,591 mm) tall. The lock drive interfaces with standard euro groove lock points and keepers. Our Euro Contour™ operator has increased load carrying capacity and 22% more operating leverage for ease of operation. Operator slides are designed to use the euro groove for ease of installation. All Euro Contour products have an integrated gasket to maximize weather resistance around each hardware location. CHIC hinges provide 220 lb sash weight capacity with concealed styling and full adjustability.

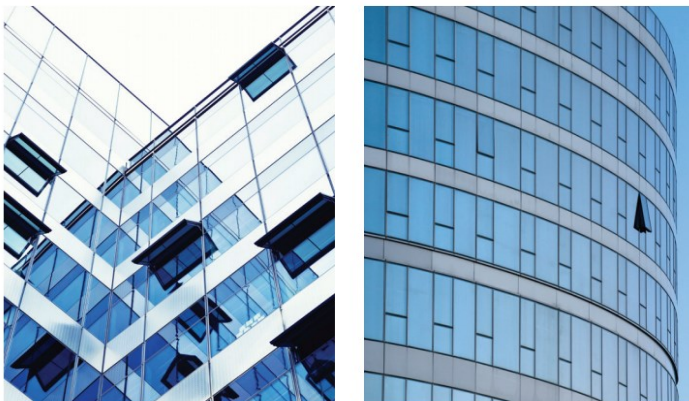


Euro Contour™ Lock



CHIC Concealed Hinges

We've built a reputation designing hardware.



Euro Contour™ Operators

Secure your sash with hardware you trust.

Euro Contour Locks

Features & Benefits:

- Interface with standard euro groove locking components.
- Integrated gasket enhances weather resistance.
- Handle design improves clearance for easy screen removal.
- Handle size improves ease of operation and supports ADA force requirements.
- Both standard Contour and LP Contour styles available

Technical Specifications

Casements:

- Up to 102" frame height
- 250 lbs. per lock point
- Up to 8 lock points
- DP 100 Capable on gateway size (36" x 72")

Euro Contour Operators

Features & Benefits:

- Operator slides interface directly with T1 euro groove.
- Concealed fasteners improve interior aesthetics.
- Integrated gasket enhances weather resistance.
- Handle is offset to provide increased clearance of side extension jambs.
- Operator design improves ease of operation and supports ADA force requirements.

Technical Specifications

- Casement sash load carrying capacity is 100 lbs. (36" X 72")
- AAMA Architectural Window rating for load and cycle life
- Stainless steel operator arms available.
- Operators are available in awning, single arm, and dyad.

CHIC Hinges

Features & Benefits:

- Concealed hinge design give clean interior and exterior aesthetics
- Interface directly with T1 style euro grooves
- 3 axis adjustability
- Up to 180 degree opening

Technical Specifications

- 220 lbs. per hinge pair
- Optional 330 lb version available
- Cam action installation with lock down screws.

Euro Contour Products and Part Numbers

Contour Products	Part #'s
Lock - Multi-Point Lock	24.50.XX.001
Lock - LP Multi- Point Lock	24.45.XX.001
Lock - Pawl (Giesse)	TBD by Profile
Lock - Adjustable Keeper (Giesse)	TBD by Profile
Awning Operators - 11.0 Arms	55.10.XX.221
Awning Operators - SST 11.0 Arms	55.10.XX.521
Awning Operators - 9.0 Arms	55.12.XX.221
Awning Operators - SST 9.0 Arms	55.12.XX.521
Awning Operators - 5.5 Arms	55.11.XX.221
Awning Operators - SST 5.5 Arms	55.11.XX.521
Single Arm - 14" Left Hand	55.00.XX.221
Single Arm - 14" Right Hand	55.00.XX.222

Contour Products	Part #'s
Single Arm - 8" Left Hand	55.02.XX.221
Single Arm - 8" SST Left Hand	55.02.XX.222
Single Arm - 14" Left Hand SST	55.00.XX.521
Single Arm - 14" Right Hand SST	55.00.XX.522
Single Arm - 8" Left Hand SST	55.02.XX.521
Single Arm - 8" SST Left Hand SST	55.02.XX.522
Casement Slider (1 per)	24855
Awning Slider (2 per)	15146
Operator Handle Folding	12869.XX
Operator Handle - Non-folding	11454.XX
Standard Duty CHIC Hinge LH	043540001
Standard Duty CHIC Hinge RH	043540002